



Introduction to Healthcare Coalitions

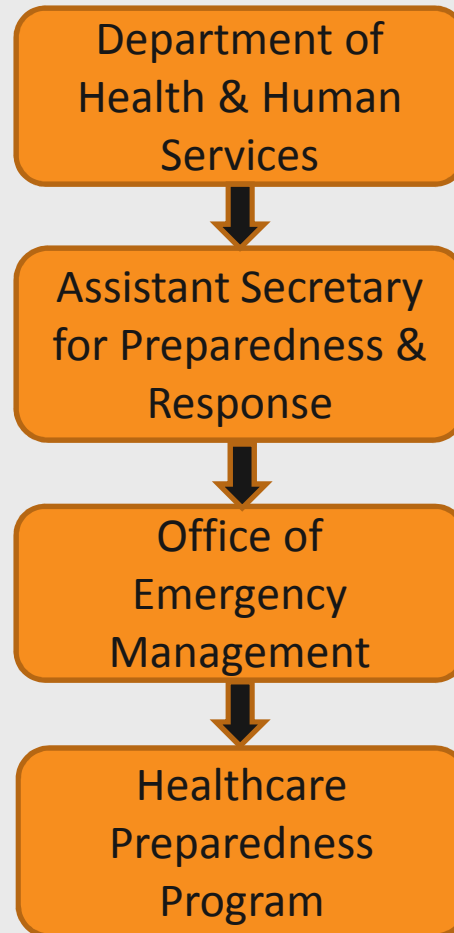
Bureau of Preparedness & Response
Medical Surge Unit

Healthcare Preparedness Program (HPP)

An Overview...



Healthcare Preparedness Program



Healthcare Preparedness Program

- Provides leadership and funding to States, territories, and eligible municipalities
- HPP funding supports:
 - Improving Infrastructure
 - Capability-based approach to planning
 - Development and sustainment of HCCs



Healthcare Preparedness Program

- Since 2002, Florida has disbursed over \$100 million dollars to hospitals to prepare them for a medical surge event.
 - Training
 - Exercises
 - Equipment

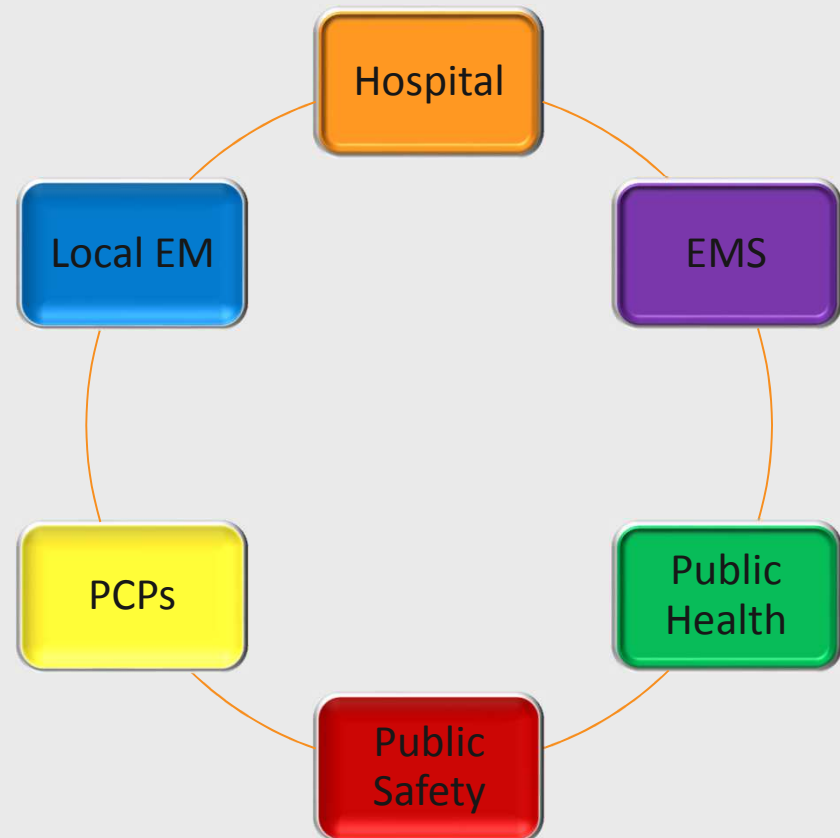


Healthcare Preparedness Program

Old Way



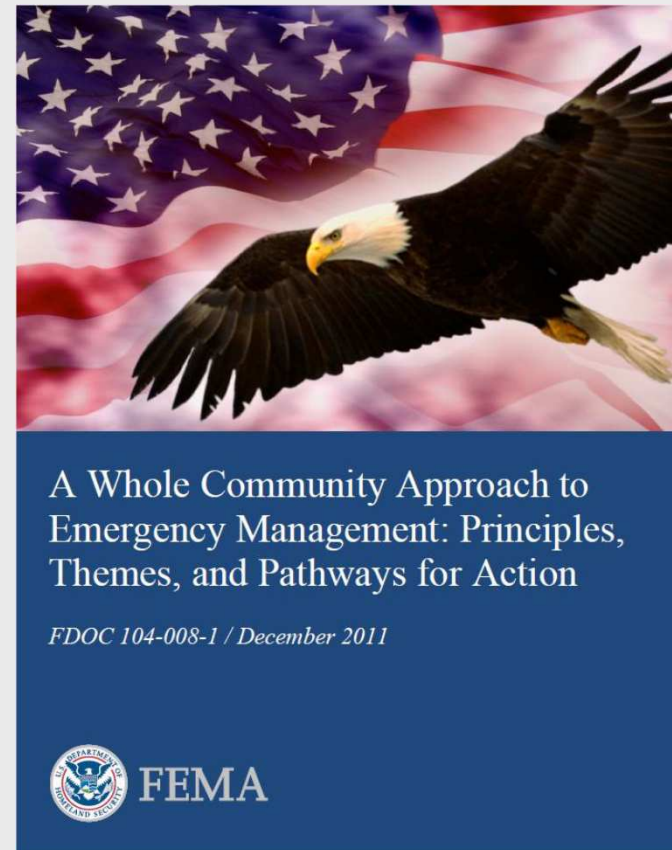
New Way



Federal Program Guidance

- A Whole Community Approach to Emergency Management
(December, 2011)

<http://www.fema.gov/library/viewRecord.do?id=4941>



Principles of Whole Communities

A government-centric approach to emergency management is not enough to meet the challenges posed by a catastrophic incident. Local events require the planning and participation of the entire community; private and public, not just government

Solution:

- Understand and meet the actual needs of the whole community.
- Engage and empower all parts of the community.
- Strengthen what works well on a daily basis in communities.
- Whole communities = Resilient communities



Solution:

Healthcare Coalitions



Purpose and Focus

- ASPR has made healthcare coalition development a priority during the current five-year funding cycle
- Currently in 2nd year of 5 year grant
- Community HCC development is vital to building capabilities related to healthcare system preparedness, response and recovery



Defining Healthcare Coalitions

- A collaborative network of healthcare organizations and their respective public and private sector response partners which serve as a multi-agency coordinating group.
- Healthcare coalitions assist Emergency Management and ESF-8 with preparedness, response, recovery, and mitigation activities related to healthcare organization disaster operations.



Relation to RDSFT

RDSTF

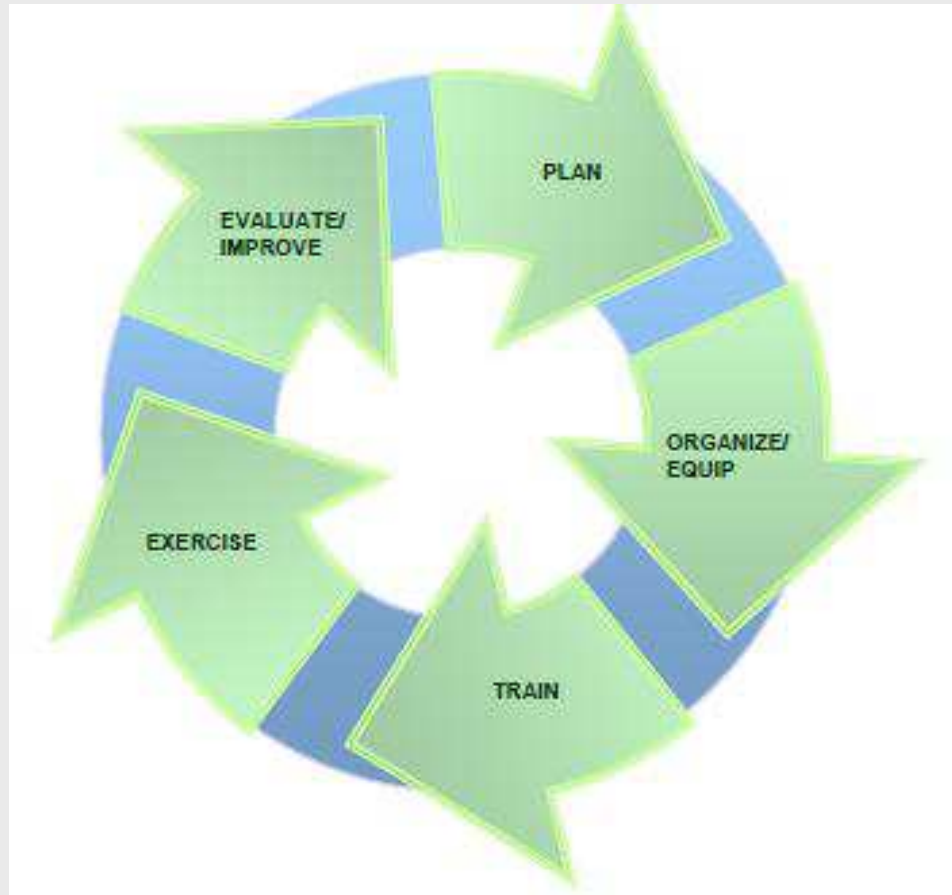
```
graph TD; A[RDSTF] --> B[Health & Medical]; B --> C[Healthcare Coalitions];
```

Health & Medical

Healthcare Coalitions

HCCs in Preparedness

- Plan
- Organize/Equip
- Train
- Exercise
- Evaluate/Improve



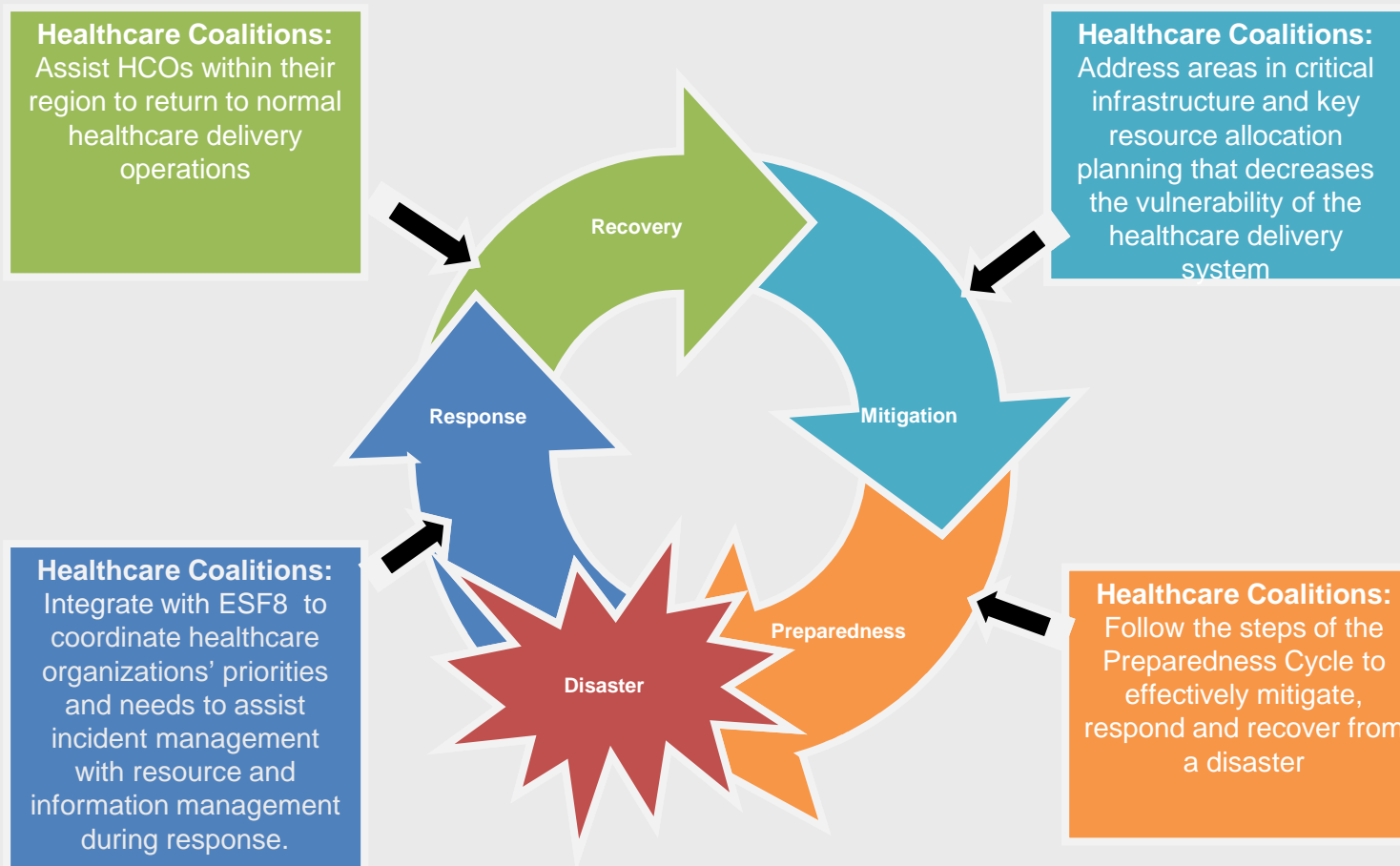
HCC in Response Support

Healthcare coalitions must demonstrate multi-agency coordination during response (exercise or real-life)

- Either a role to assist incident management (e.g., local area command / unified command; ESF-8) with decisions and/or mission support
- OR coordinated plans to guide decisions regarding healthcare organization support
- OR a combination of both



Disaster Cycle



Key Concepts

Capability based approach to planning: Coalitions should enhance healthcare system planning and response at the local level

- HCCs are not response organizations
- Involve member organizations;
- Develop naturally through existing partnerships and service delivery patterns
- Collectively plan, organize, equip, train, and exercise



Healthcare Coalition Recognition

- Formalized by:

Bylaws

Charter

Formal Agreements with Partners (MOUs, MOAs, etc)

Governance Structure

Voting Structure

Meeting Schedule, Agendas, Minutes



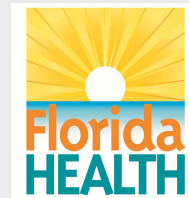
Essential HCC Members

- Hospitals and Health Systems
- Local Emergency Management / Public Safety
- Local Public Health (MRC, CHDs, State Labs)
- EMS Providers (Public & Private)
- Long-Term Care
- Behavioral & Mental Health
- Specialty Service Providers (e.g., dialysis, pediatrics, urgent care, etc.)



Essential HCC Members

- Support Service Providers (e.g., laboratories, pharmacies, blood banks)
- Primary Care Providers
- Community Health Centers
- Tribal Healthcare
- Federal Entities (e.g., NDMS, VA hospitals, DOD facilities)
- Private entities associated with healthcare (e.g., Hospital Associations)



Additional HCC Members

- Local and State Law Enforcement
- Public Works
- Private Organizations
- Non-government Organizations
- Non-Profit Organizations
- Volunteer Organizations Active in Disaster (VOAD)
- Faith-based Organizations



Additional HCC Members

- Community-based Organizations
- Volunteer Medical Organizations (e.g., American Red Cross)
- Other Partners (as relevant)



Additional HCC Requirements

- Develop HCC infrastructure
- Perform risk assessment
- Perform resource assessment
- Identify and prioritize healthcare assets and essential services
- Identify gaps



Additional HCC Requirements

- Coordinate emergency preparedness activities (Training and Exercise for HCC's)
- Develop operational plans in coordination with Emergency Management
- Exercise risk-based objectives
- Demonstrate performance



Florida's Approach

Healthcare Coalition Task Force

- Diverse Representation: Hospital, Public Health, Long-Term Care, Mental/Behavioral Health, EMS and other stakeholders
- Leadership integration on-going
- Guidance and recommendations for progress at the end of BP 2.
- Assist in setting pace of progress for Healthcare Coalition development and sustainment



Florida's Approach

Goal: *Provide 100% coverage for the health and medical needs of Florida's population (permanent and transient) for all communities*

- Existing groups in each region
- Some formal; some informal
- Some more developed than others
- There are gap areas
- Shape development of future healthcare coalitions
- Support existing healthcare coalitions



Medical Surge Support

- Acts as liaison to all levels of government; federal, state and local to ensure common concept ideology.
- Website with links to resources for supporting development and sustainment of Healthcare Coalitions.
- Administrative support for HCC Task Force and Sub-committees.
- Informational webinars
- Supports contract funding
- Marketing materials



In Summary

- Healthcare Coalitions just make sense
- They allow community partners to leverage training and exercise funds
- They make communities more self-sufficient
- They foster relationships
 - Who has resources? Who can I call?
- They offer a way to finally measure if we are becoming more prepared.



Thank You!!



Christie Luce
Medical Surge Unit Lead
850-245-4444 x 3625