

Example #2
ACTIVE THREAT SITUATION RESPONSE PLAN
Facility Lockdown
3-Pages

This information is provided by the **Hernando County ESF-8 Working Group** as references material and is not intended as a complete policy or process. Individual facilities may adapt and edit this material to fit their unique needs.



HERNANDO COUNTY ESF-8 WORKING GROUP

To enhance health and medical preparedness and response in Hernando

Lockdown Policy

Policy: The ability to lockdown of the Facility in the event of an emergency event which threatens the safety of patients, employees, staff and visitors and/or Facility operations is of paramount important.

Procedures: Locking down the Facility is the process by which pedestrian and vehicular traffic is channeled to specific entry / exit points.

A lockdown may be directed by:

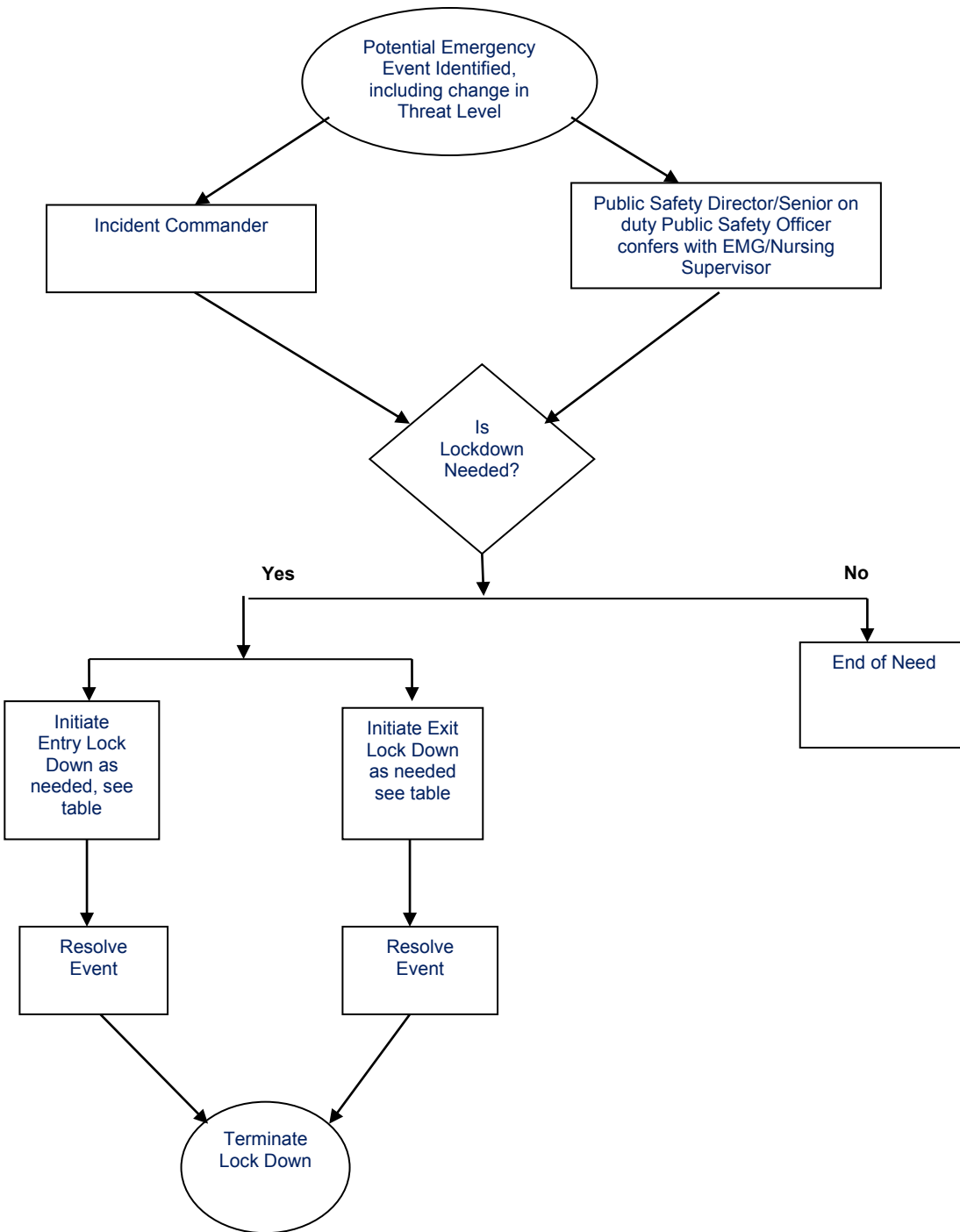
The director of public safety has the authority to defer and / or deny access based upon his / her assessment of the situation. It is preferable that the determination be made with consultation of members of the executive management group.

However, in the event of a true emergency that requires immediate intervention, such as a CODE PINK or Active Shooter this action may be undertaken independently by the senior on duty public safety officer. In this event, the director of public safety will review the situation and his/her assessment with a member of the executive management group. During off-hours this collaboration will be with the nursing supervisor.

Reasons for Lockdown

Event	Prevent Entry	Prevent Exit
Active Shooter	X	
Bomb threat	X	
Child Abduction	X	X
Civil disturbance	X	X
External Contamination	X	X
Fire	X	
Flooding	X	
Hostage event	X	
Infant abduction	X	X
Missing person		X
Power failure	X	

(**Editorial question:** does this policy need to address closing the entire campus or simply locking the Facility)



Procedure: The purpose of **Exit lockdown** is to prevent individuals from leaving due to an existing hazard outside, civil disturbance, possible exposure to a hazardous substance, or the need to screen those leaving due to a missing infant / child / person.

The purpose of **Entry lockdown** is to preserve the Facility's ability to operate and respond to a possible emergency event such as a fire, flood

or keep contaminated individuals from entering.

Public safety is responsible to close and lock required doors and gates.

Additional staff may be required to control non-entry doors, such as fire exits.